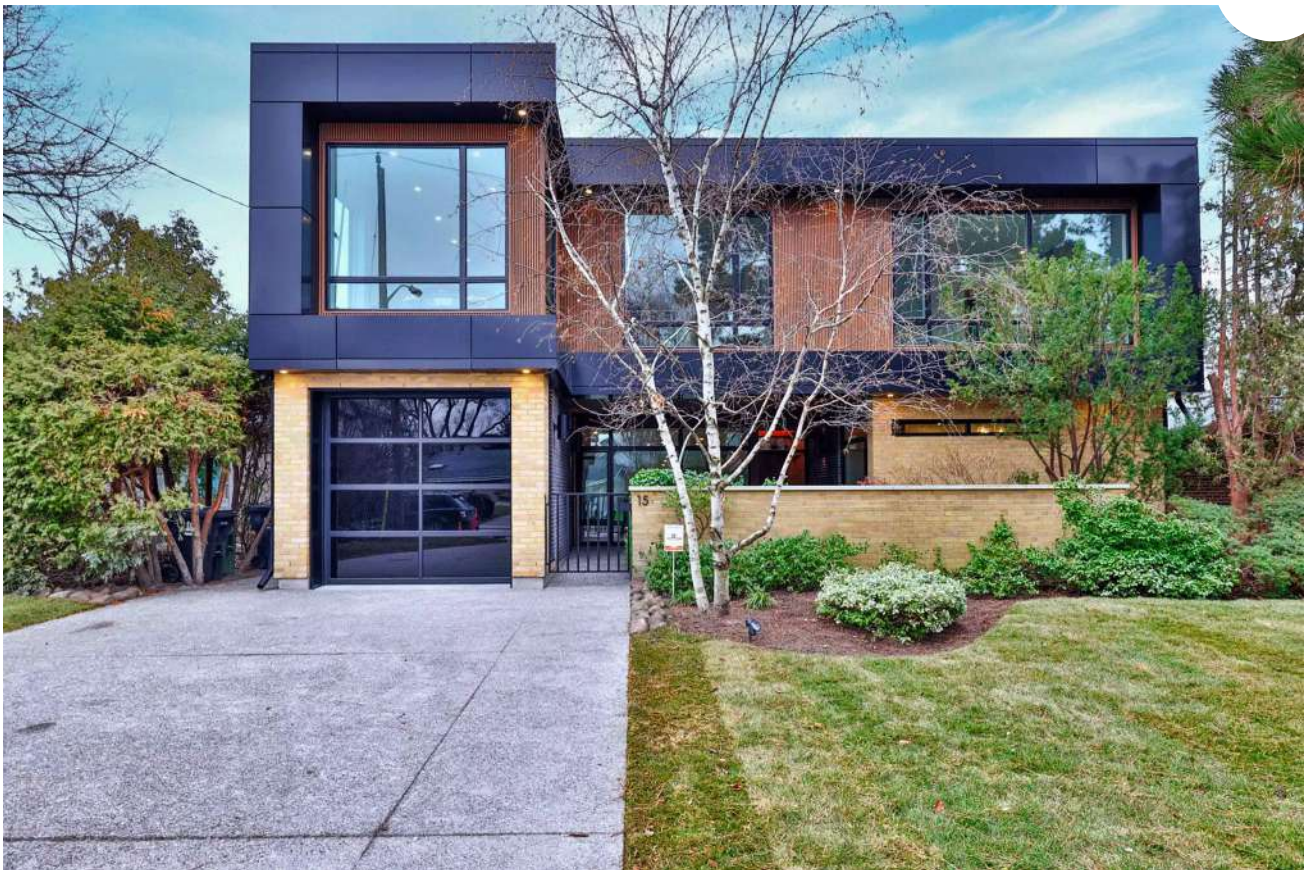


# This Unique Toronto home has a glass floor like the CN Tower

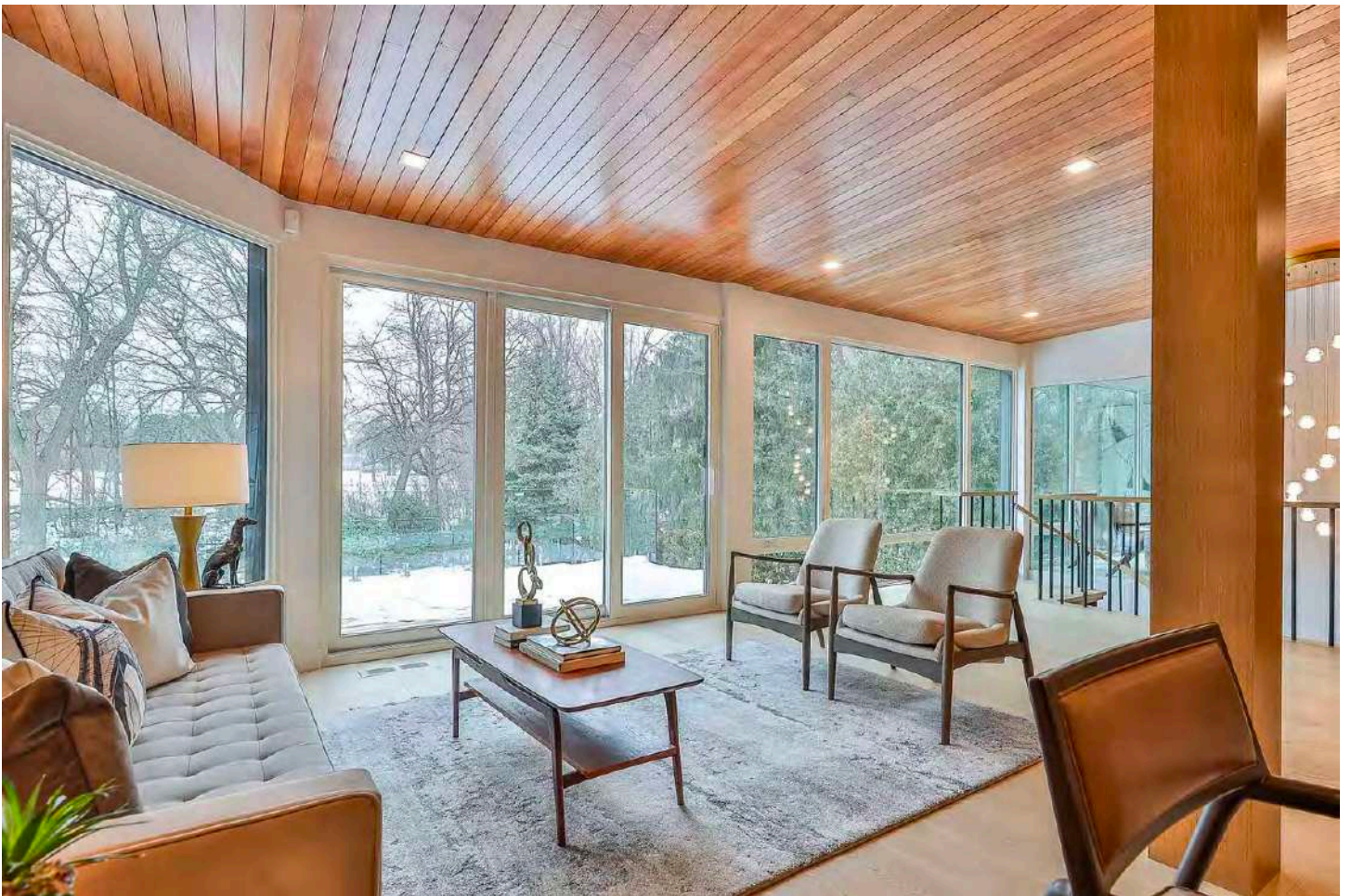


If you're a long time reader of blogTO, this house might look somewhat familiar.

---

The bungalow was designed by prominent Toronto architect **John Harold Bonnick** to be his own family home.

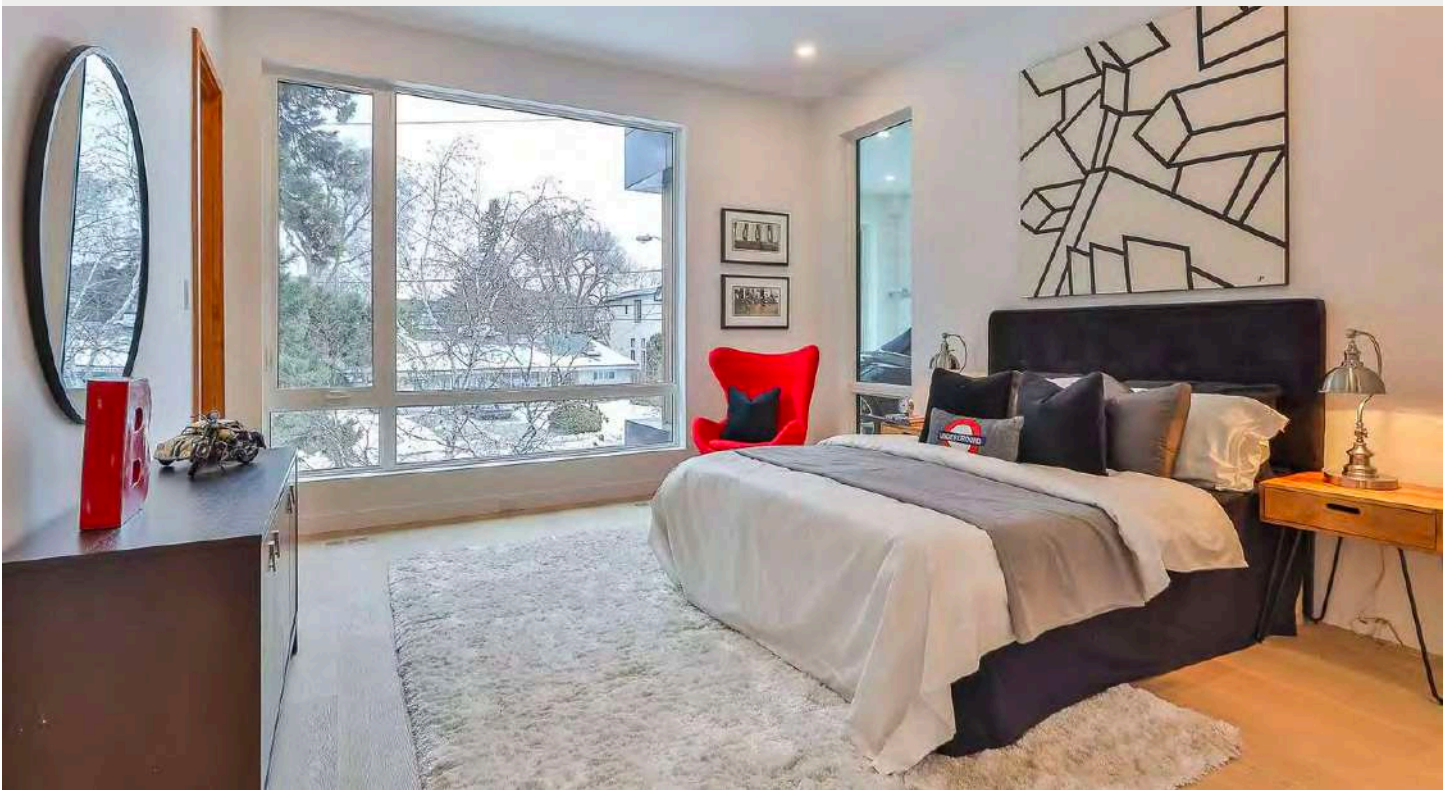
It featured stunning architectural elements like wood tongue-and-groove panel ceilings and a spiral staircase to the basement.



The living room.

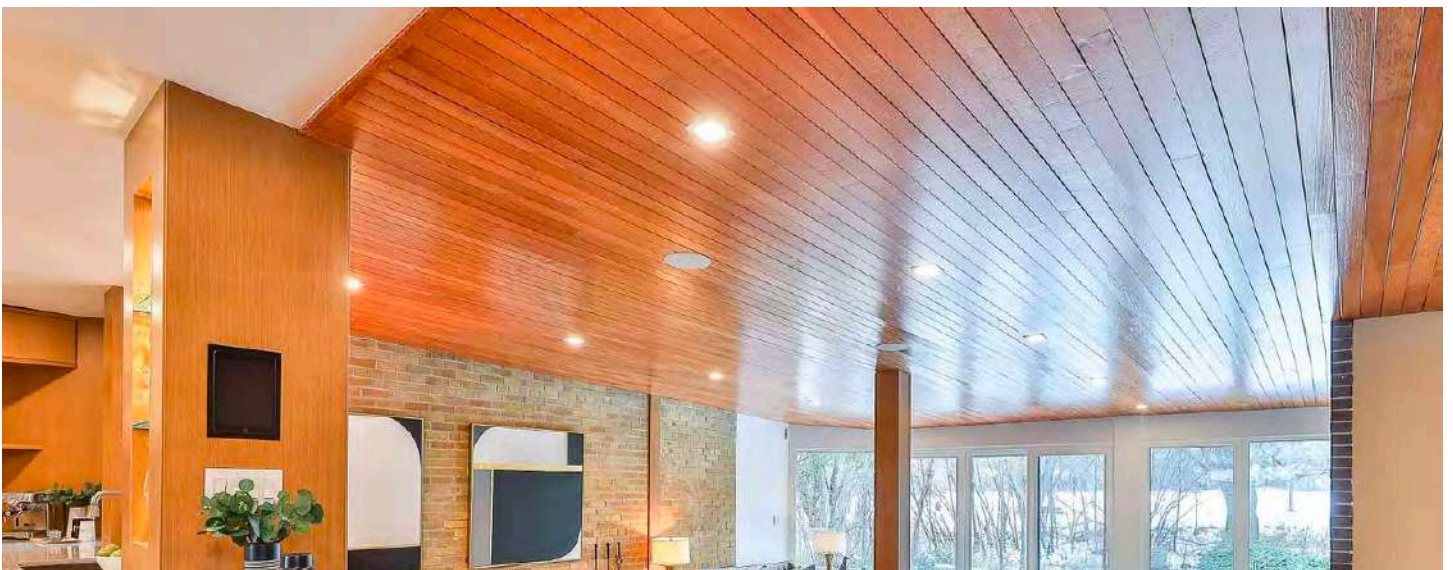
But since the house sold in 2019, it's had a major glow up. So much so that it won the **BILD's RenoMark Award** this March for Best Exterior Renovation.

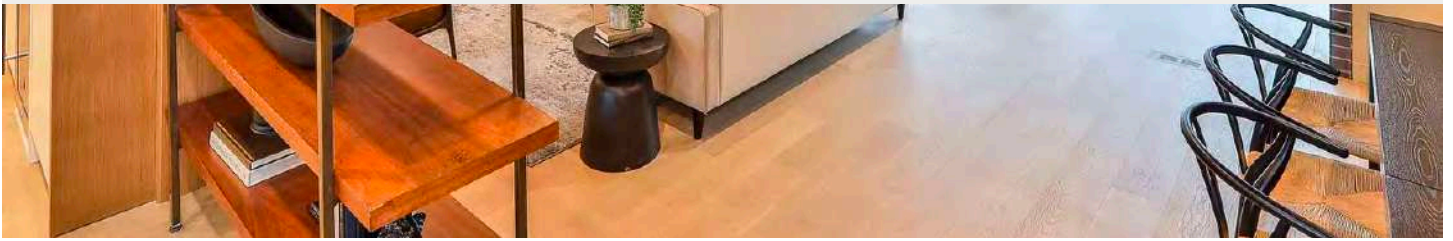
---



A new bedroom.

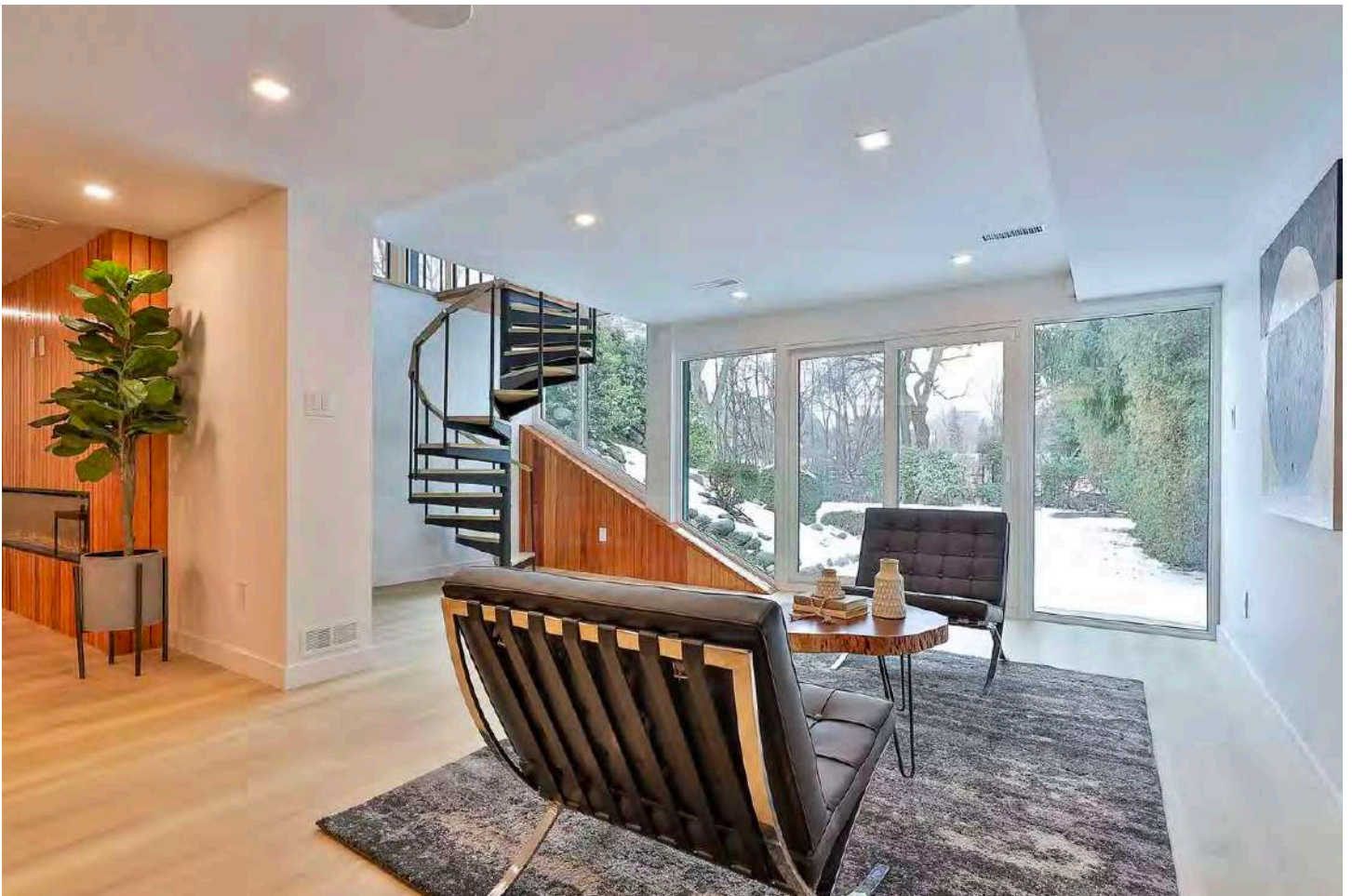
The bungalow is no longer a bungalow, as a stunning second storey was added. But fret not, the new owners managed to keep the stunning details of the original mid-century home.





The sunken living room and dining room with exposed brick walls and a gas fireplace.

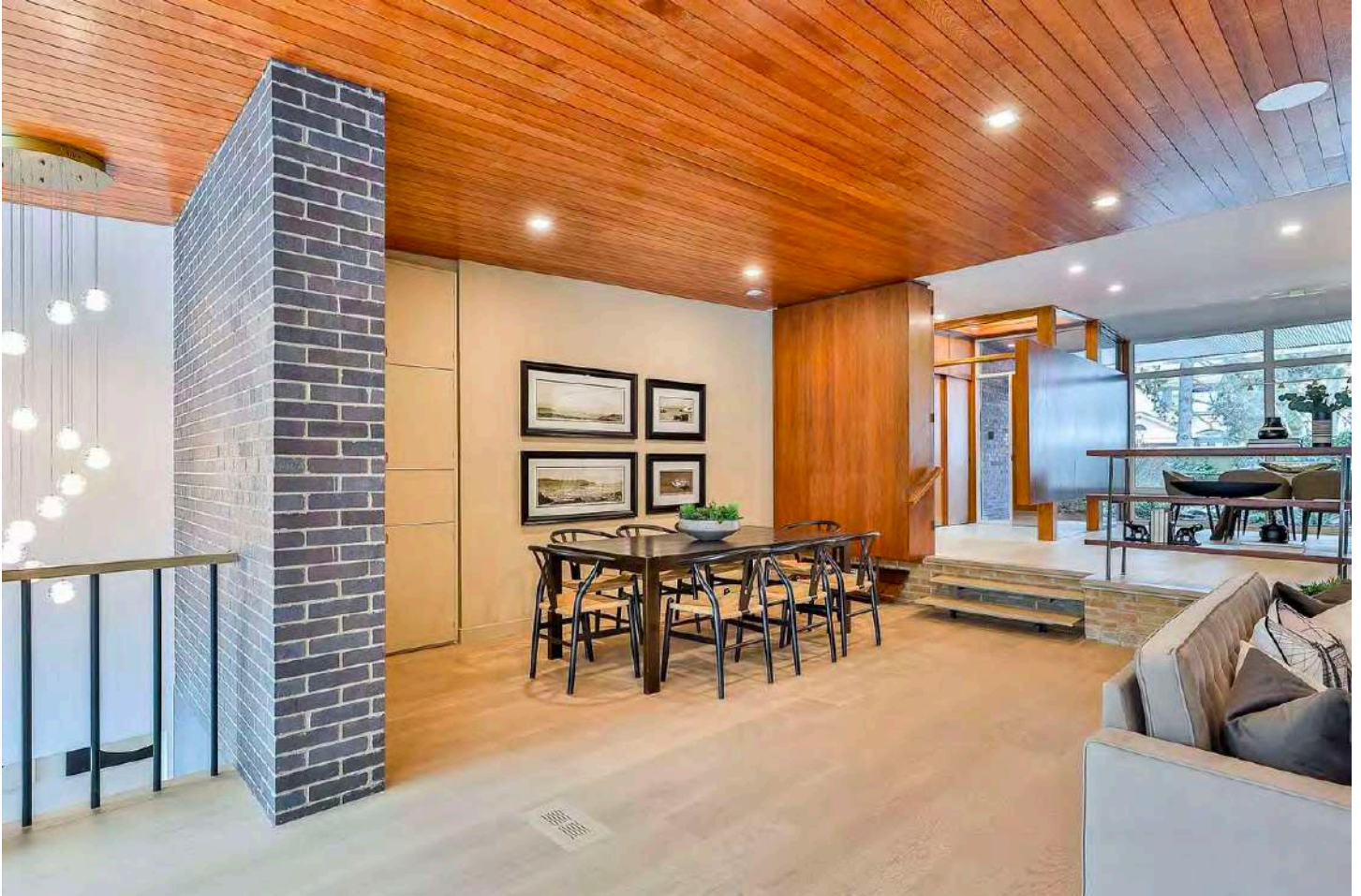
"We were very mindful to keep this type of architecture throughout, so that it would be hard to distinguish between the reno and the new build," owner Spencer Feeley told blogTO.



The walkout basement with a spiral staircase.

You'll notice the statement pieces, like the ceilings and staircase, are still

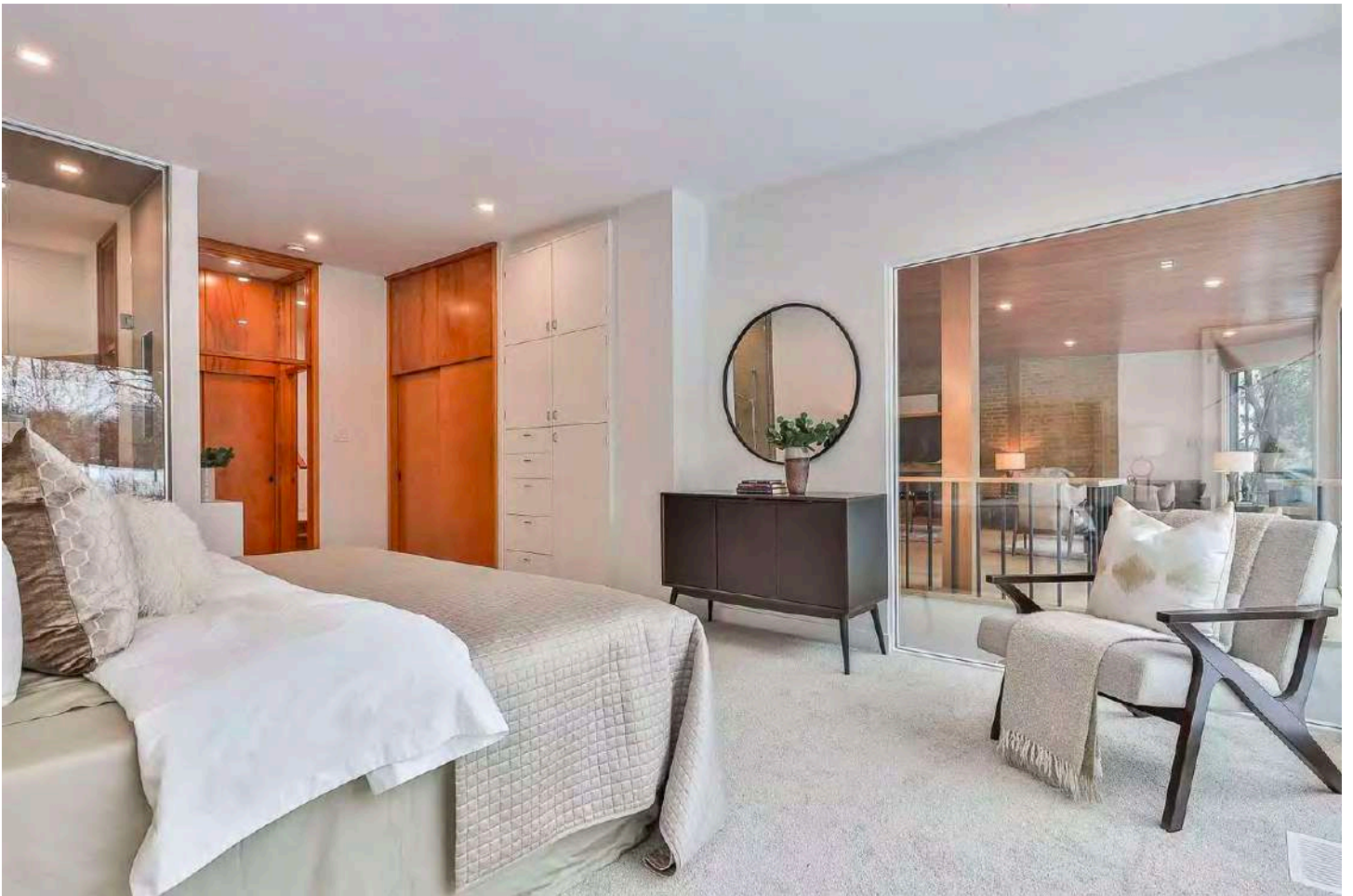
They also uncovered some other cool pieces that were original to the house.



The sunken dining room with the original exterior wall incorporated.

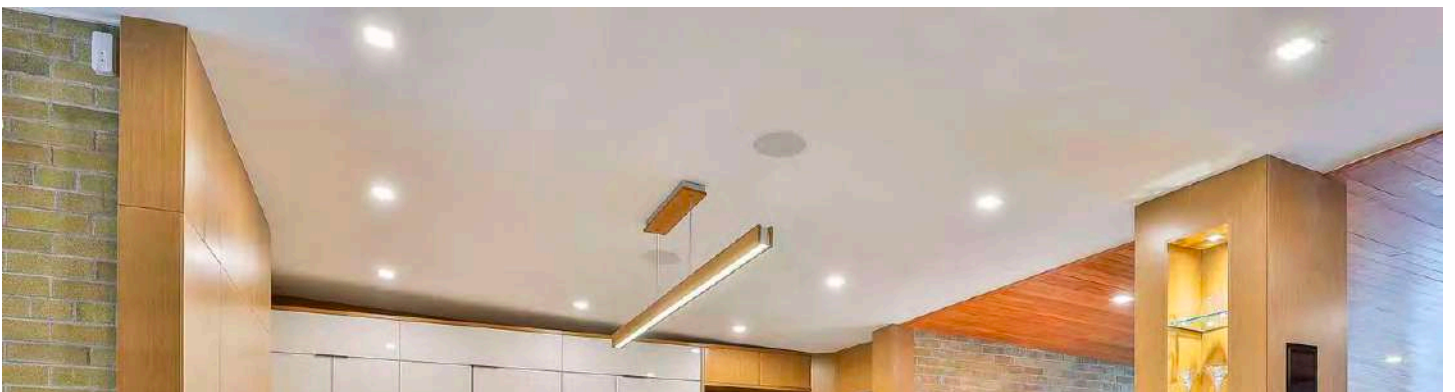
"During the renovation, we discovered the original purple brick in the lower living area that was the old rear exterior wall before an addition was put on the house in the 70s," Feeley told blogTO.

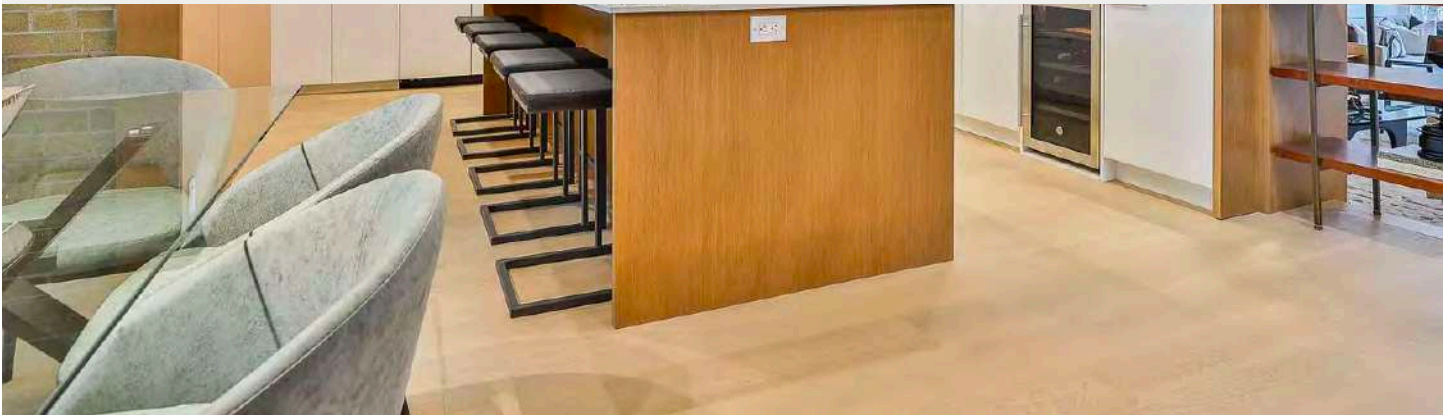
"I wanted to continue to bring the outside materials into the house seamlessly, so I decided to leave the purple brick exposed inside the living room of the house," he added.



The original primary bedroom is now an in-law suite.

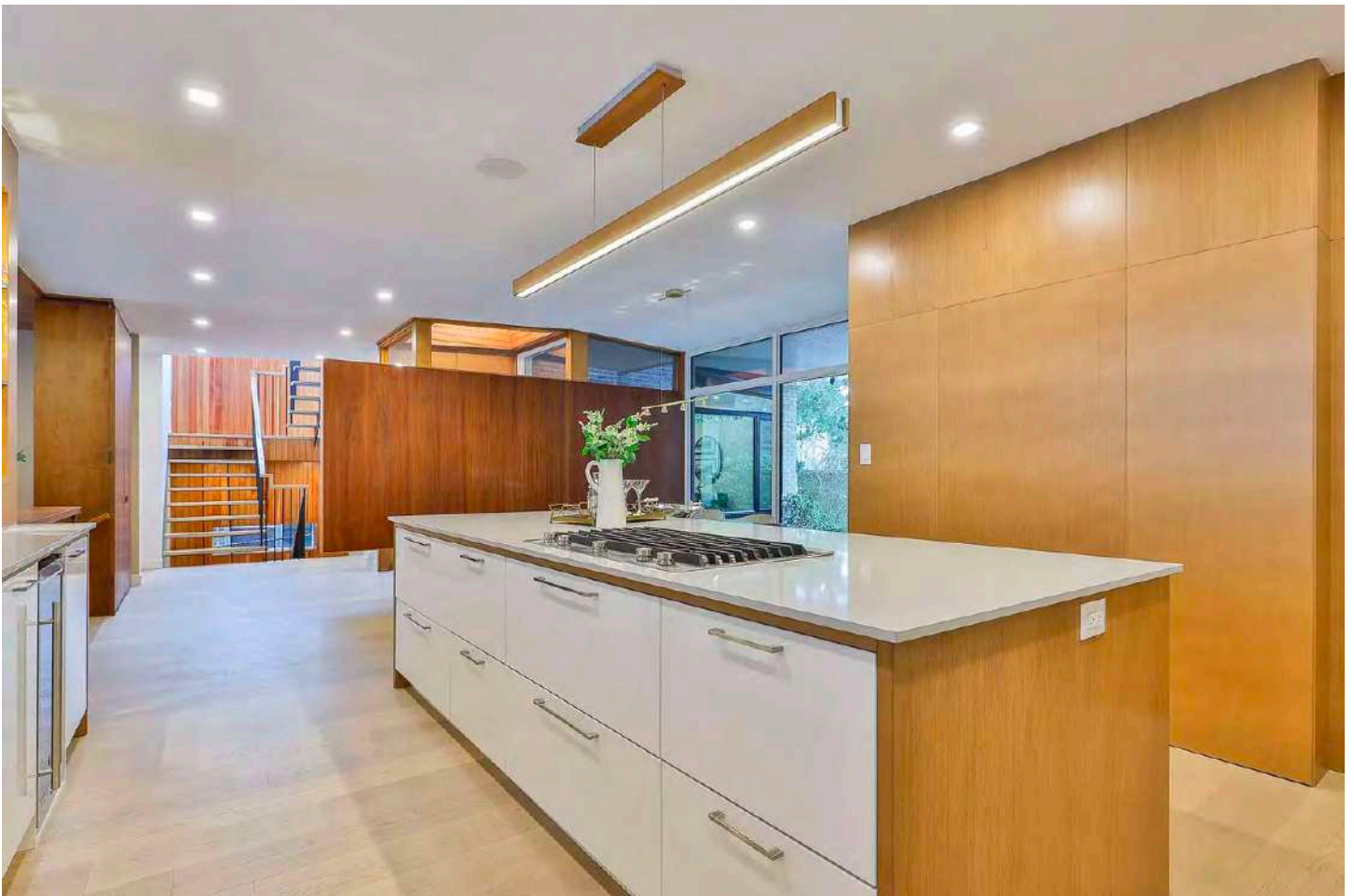
You'll also notice the addition of expansive oversized windows, open riser stairs and loads of skylights, which make this house even more bright and airy.





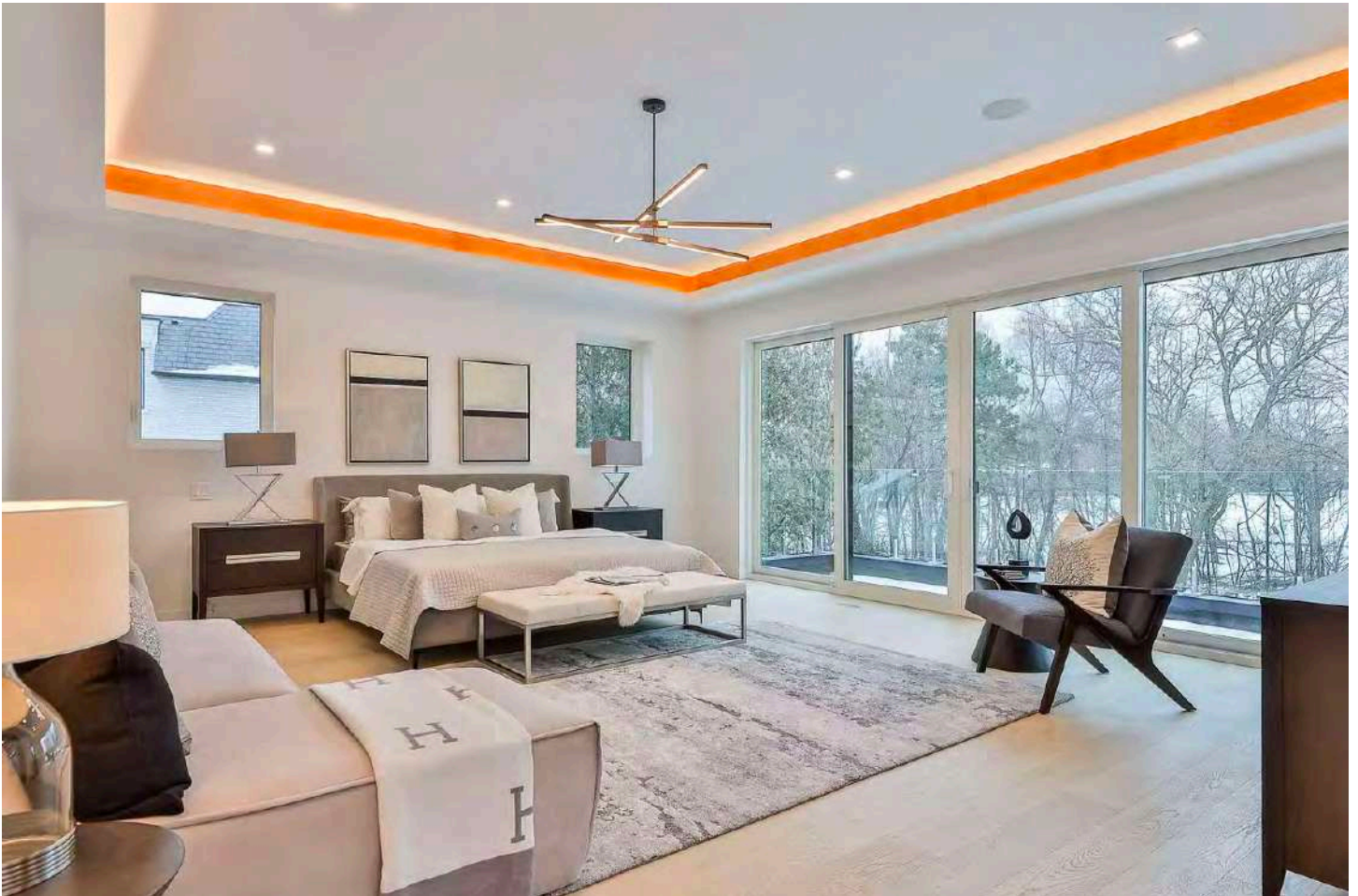
The newly-renovated kitchen has been opened up to provide a view of the ravine lot and enhance the entertainment area.

The main floor is quite similar to the original home but the kitchen has been updated.



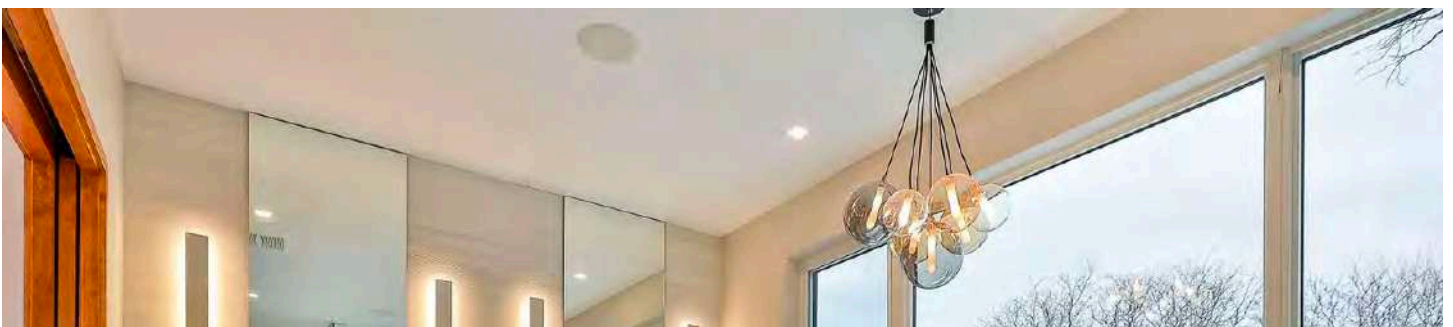
---

aesthetic of the house.



The primary suite with a 16-foot patio door system to a large private deck overlooking the Marbelite pool and ravine.

The second floor is completely new with a more modern design, most notably in the primary suite with recessed LED lighting on the ceiling.





The primary ensuite.

The primary bedroom ensuite is also very modern with a double integrated sink, a massive two-person tube, and a very fancy shower.



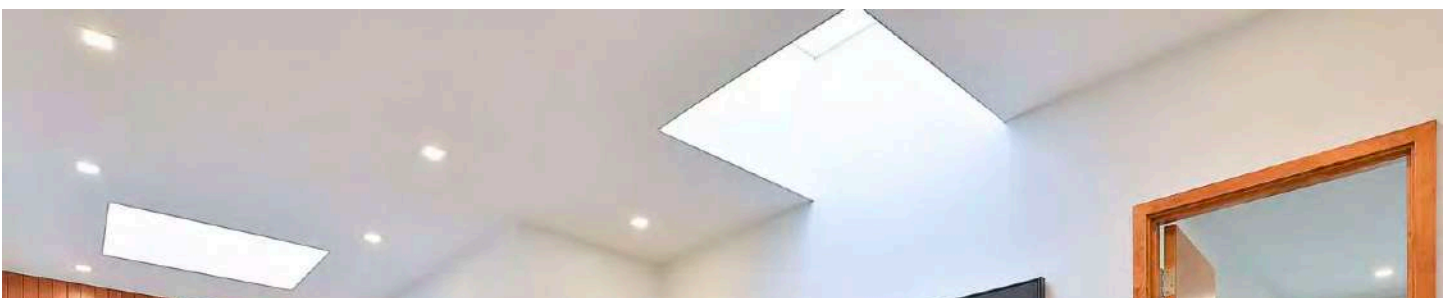
---

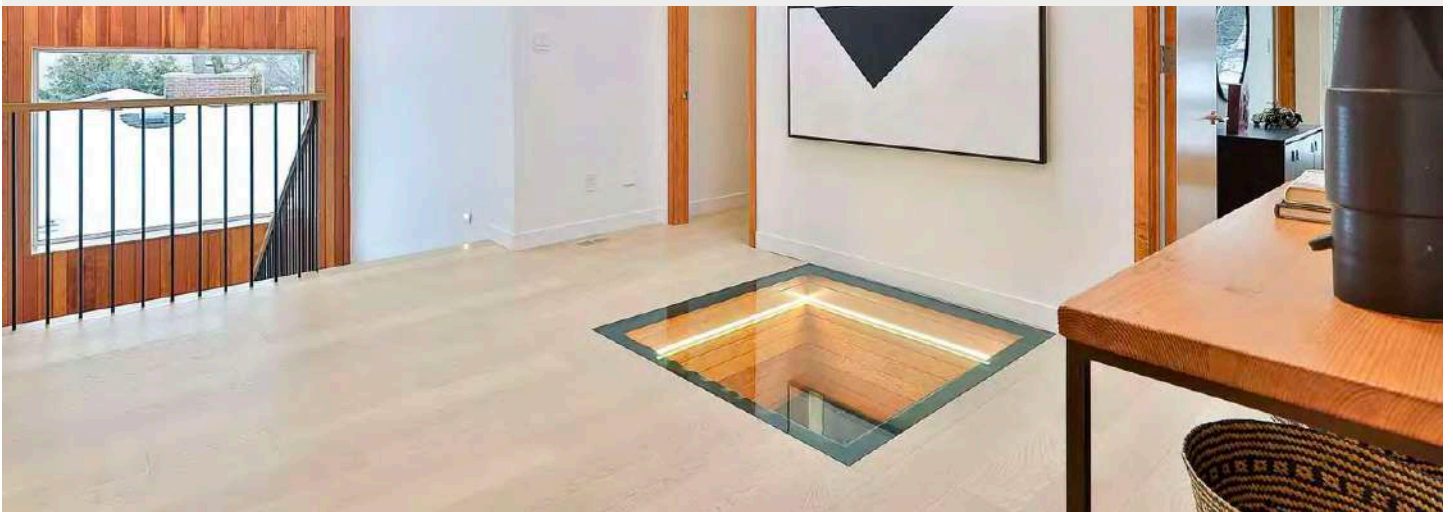
The home has also transformed from a three-bedroom, three-bathroom house to a five-bedroom, five-bathroom home.



"If you're a car enthusiast, you can have a view of your car from this bedroom," said Feeley.

One of the bedrooms even has a window that looks into the garage that features a 12-foot hydraulic lift. In short, you can basically keep a car in your bedroom like art.

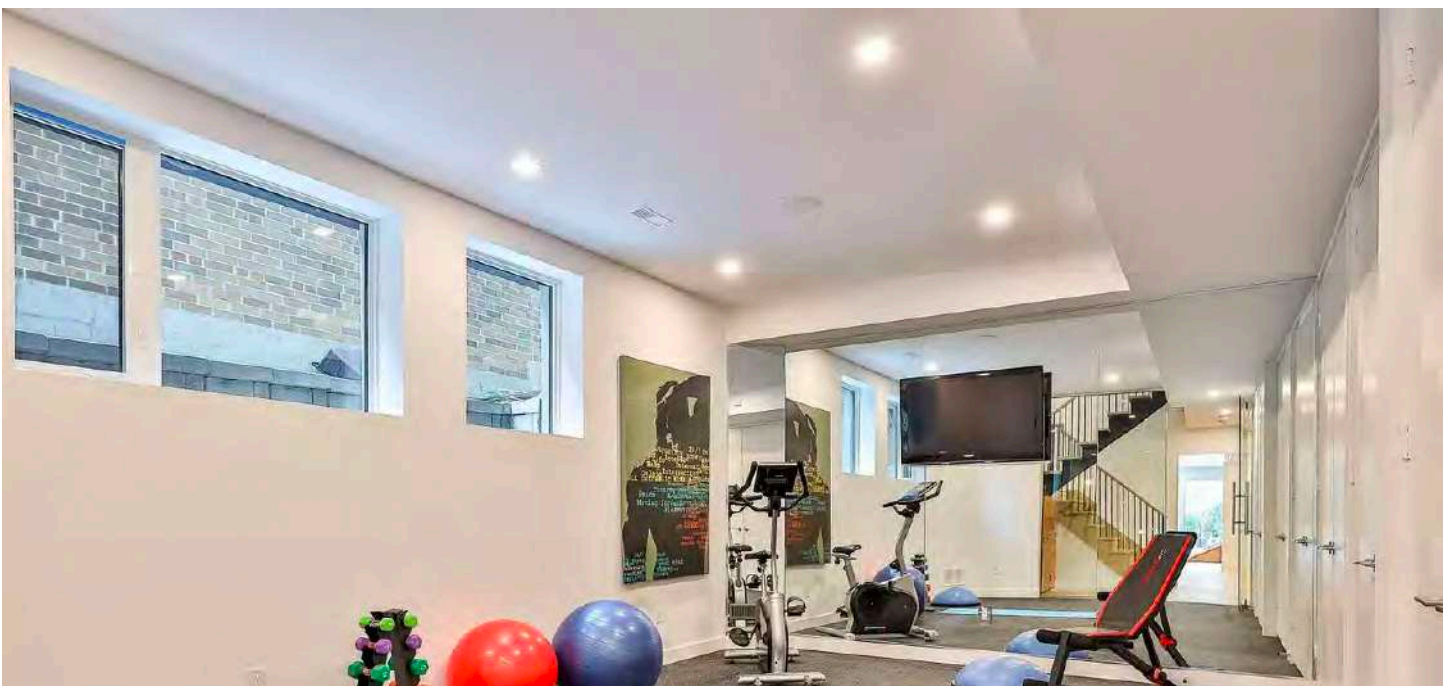




The glass floor.

Another indicator this is no longer a mid-century bungalow is the glass floor with integrated LED lighting in the foyer, which is basically a mini version of the CN Tower glass floor.

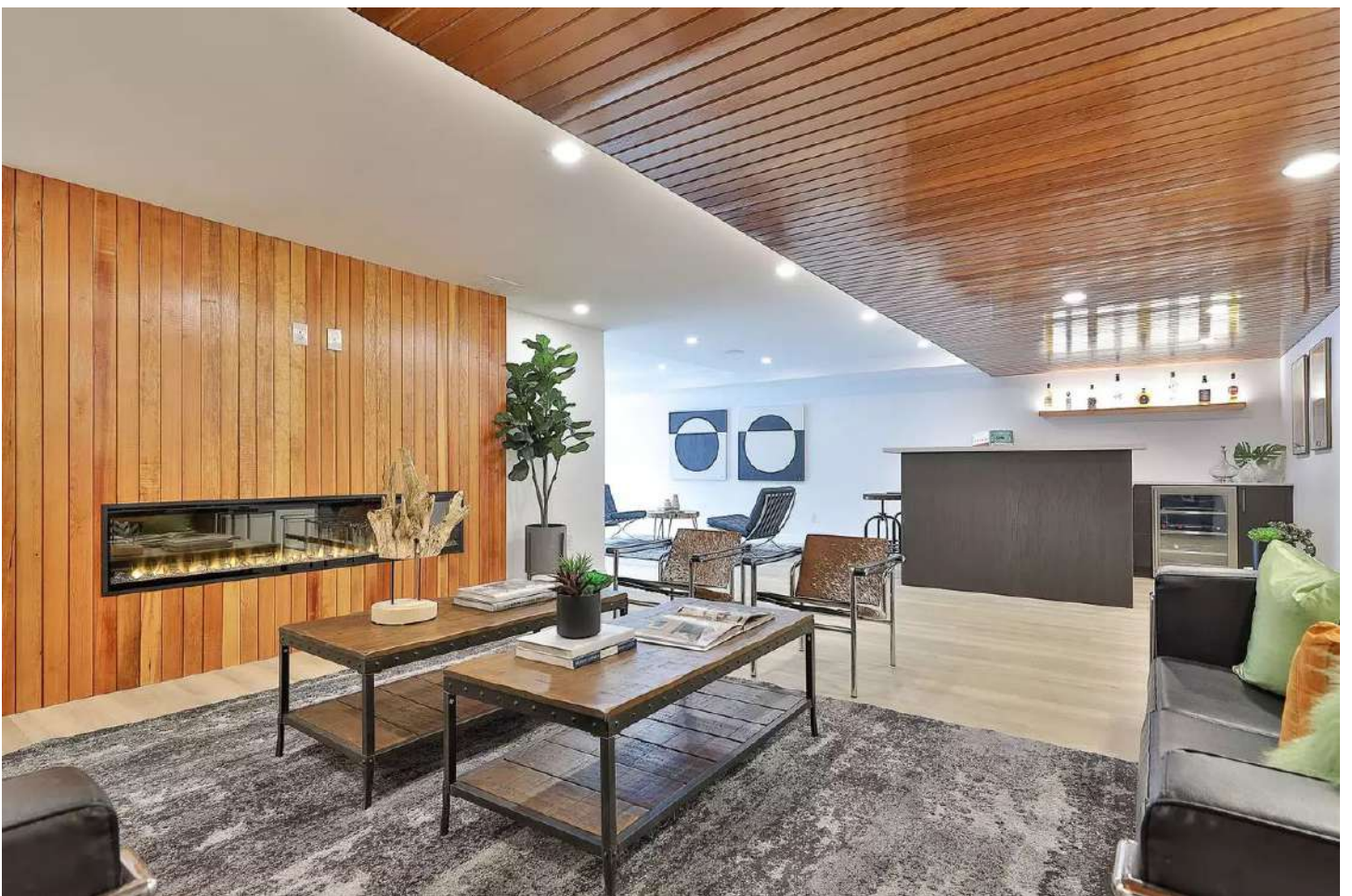
But functionally, Feeley told blogTO, "It's to bring natural light from the skylight above down to the front foyer."





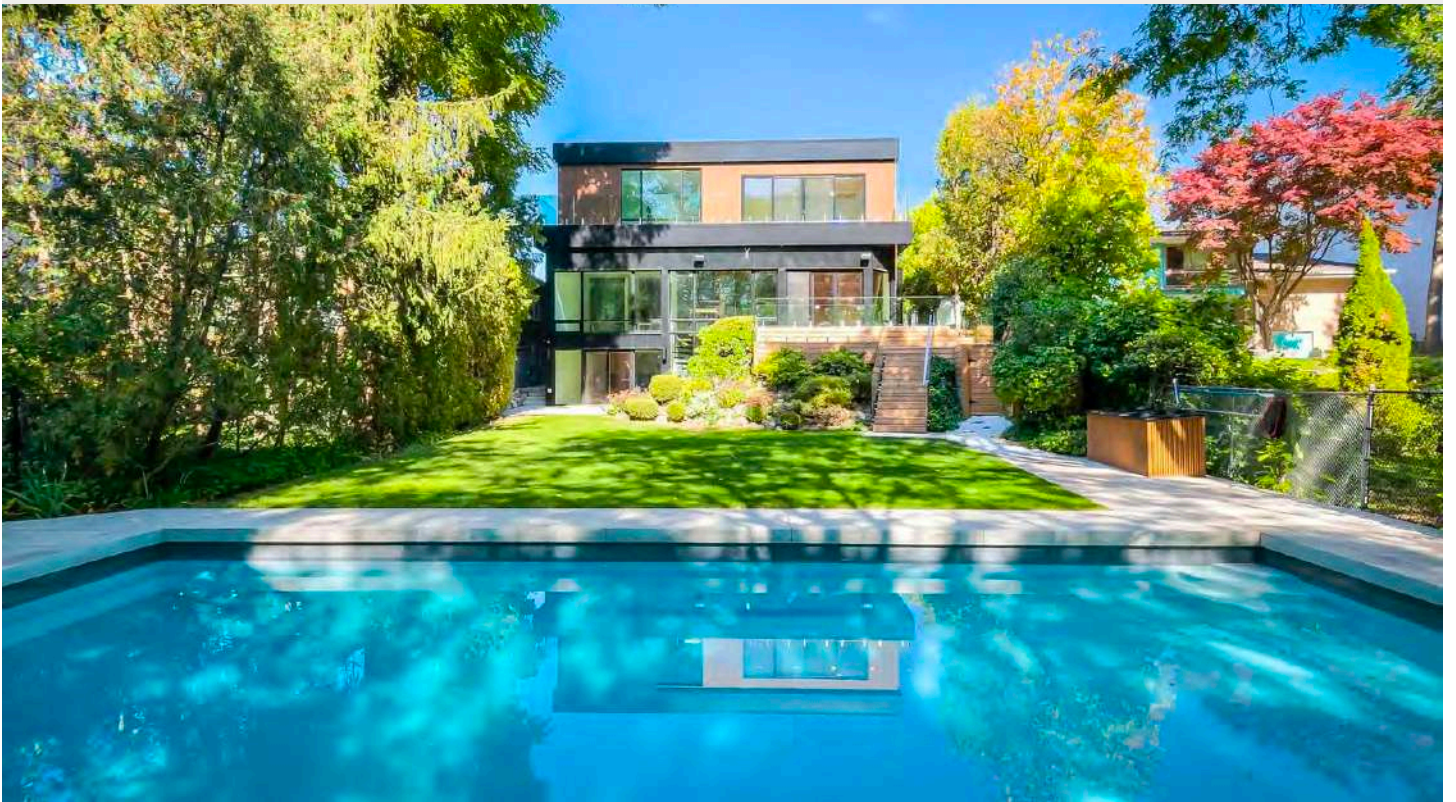
The gym.

The house is now fully smart, thanks to the new smart home system. There's also a state-of-the-art gym and a hobby room.



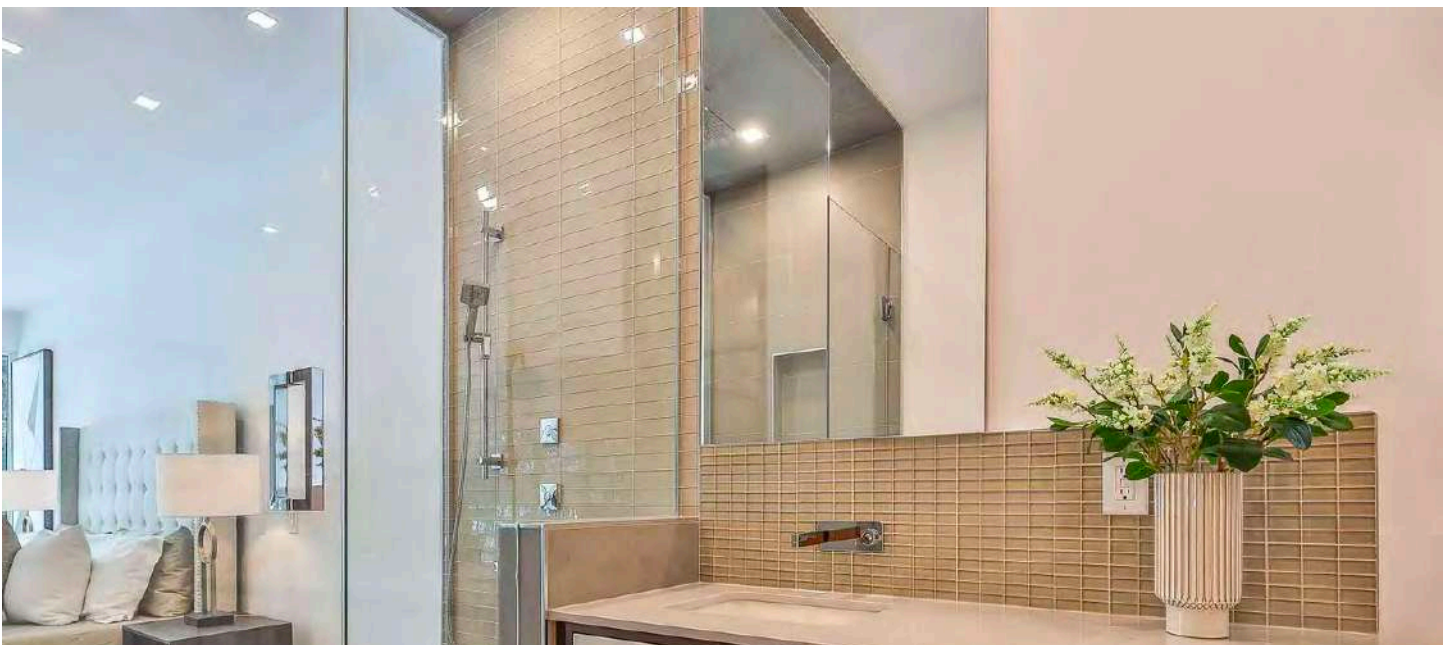
The basement rec room.

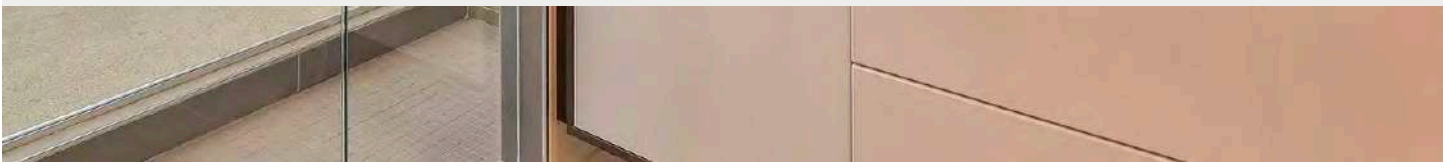
The basement has gone through some pretty cool upgrades as well with the addition of a fireplace and a wet bar with an under-counter wine fridge, making it perfect for entertaining.



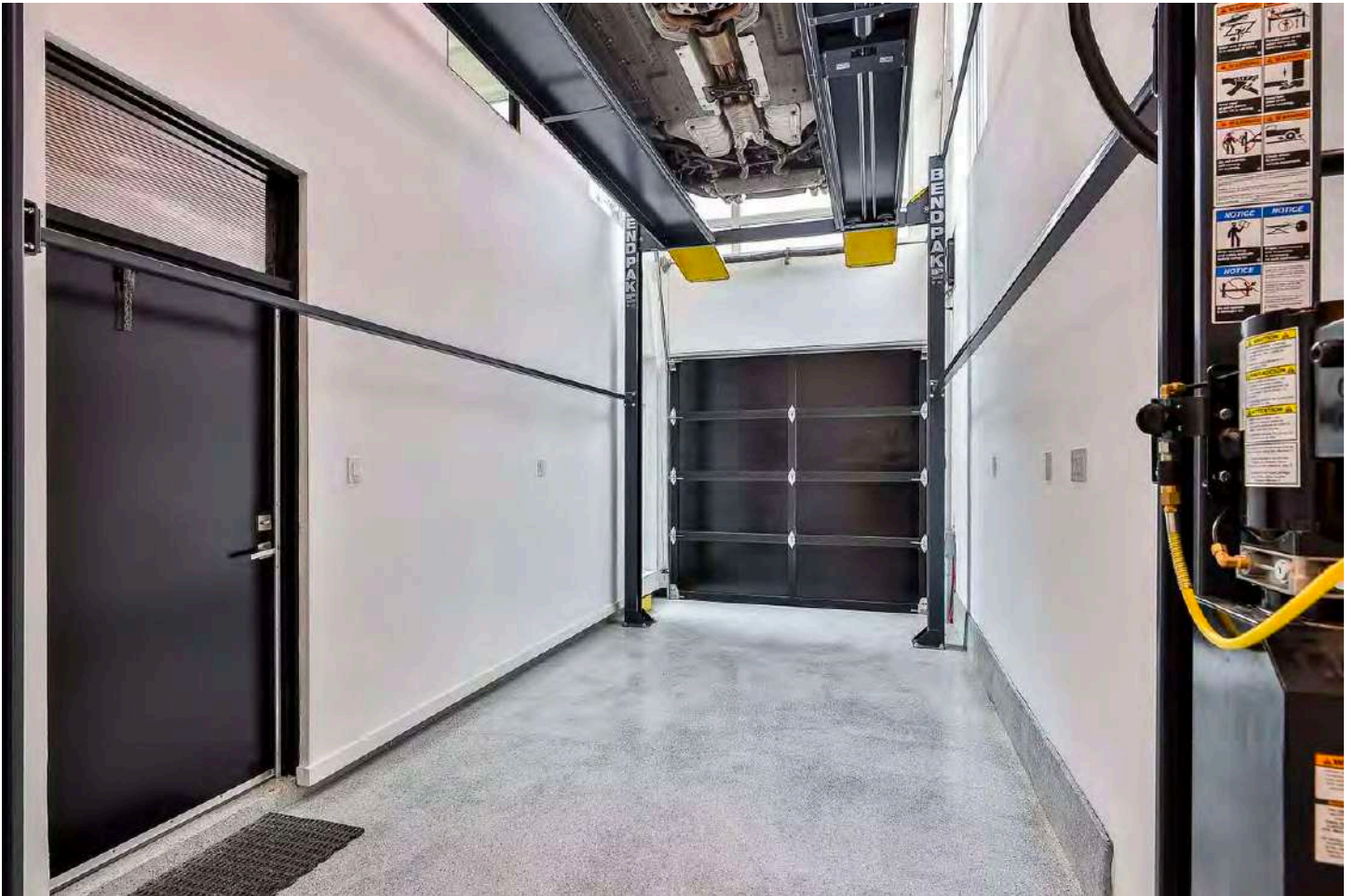
The backyard with a large deck.

The outdoor space is still stunning with a Marbelite pool, and the large ravine the home backs onto makes it feel like you're not even in the city.

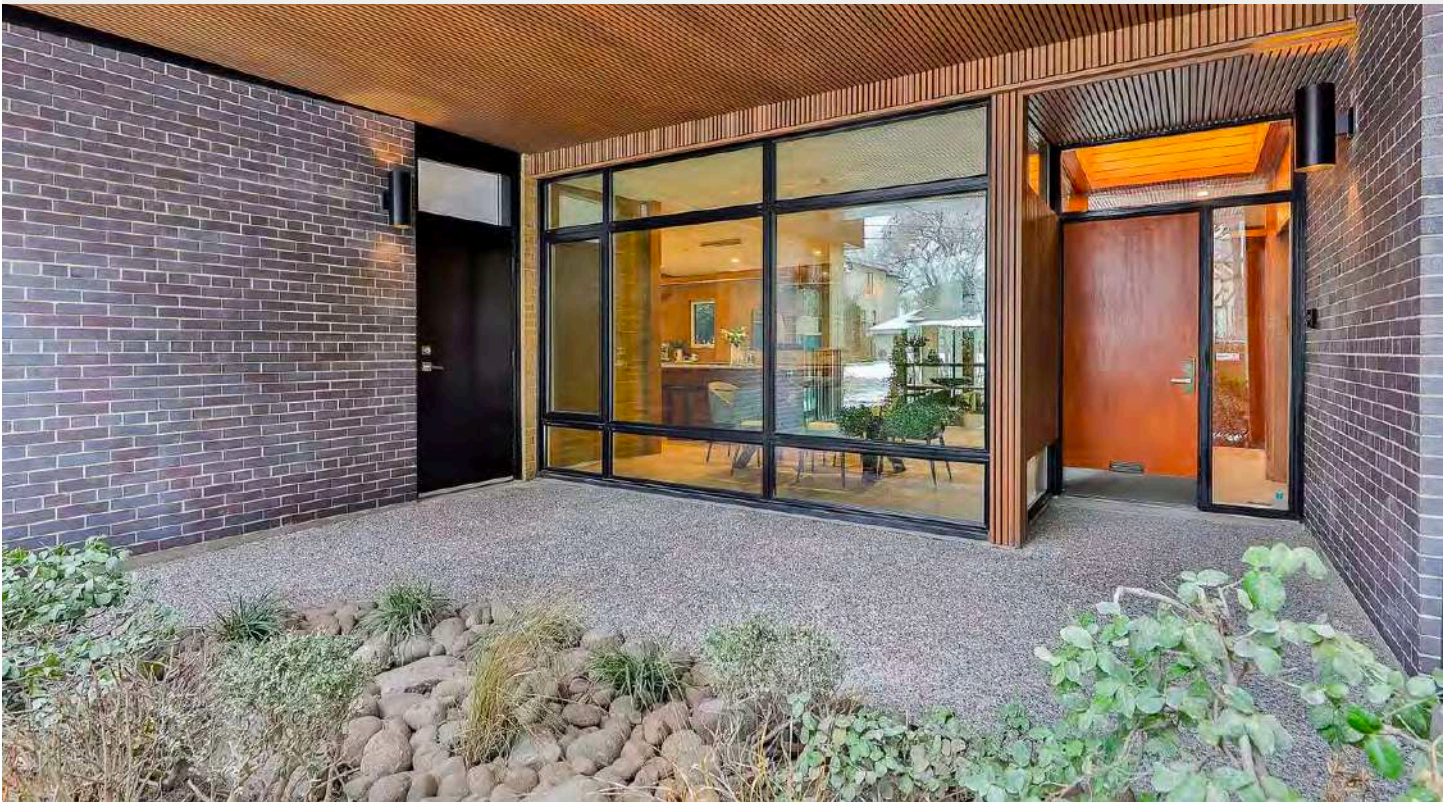




An ensuite bathroom.



The garage.



The front entrance.

Photos by Michael Peart / The Print Market